

mvBlueLYNX-X Starterkit - Quick Start Guide



Author: Ulli Lansche
Date: 05.12.2014 11:38

1 Welcome

Congratulations for having purchased your new MATRIX VISION product.

Please have a look at this short setup guide to start with our product easily.

1.1 Scope of Delivery

Please check if all listed parts are included and undamaged. Included in delivery:



Figure 1: Scope of Delivery

No	Product	Ordering code	Description	Color in Fig. 2
1	I/O-Box	MVBL-X I/O-BOX	For testing and setting up the digital inputs and outputs	Blue
2	mvBlueLYNX-X		Smart camera with mounted tripod adapter (MV-TRIPOD ADAPTER BL-X)	
3	Power supply for USB hub		Part of USB hubs (7: USB2_HUB7P_BE)	Violet
4	Lens	MV-O1214-FU	C-Mount lens with 12.5 mm focal length	
5	Tripod	MV-TRIPOD FLEX	Multiflex-Stativ for camera	

No	Product	Ordering code	Description	Color in Fig. 2
6	USB and VGA connection cable ("Y cable")	KS-BLX-VGA-USB 01.0	For connecting USB (USB hub) and a VGA compliant display	Red
7	USB hub	USB2_HUB7P_BE	For connecting a USB mouse, a USB keyboard, etc.	Violet
8	Connection cable I/O-Box mvBlueLYNX-X		Part of the I/O-Box (1: MVBL-X I/O-BOX)	Blue
9	Power cable of the power supply		Part of power supply (11: MV-DC1201 BCSX IO Rev2)	Green
10	USB connection cable		Part of USB hub (7: USB2_HUB7P_BE)	Violet
11	12 V power supply	MV-DC1201 BCSX IO Rev2	For powering the the mvBlueLYNX-X via the I/O-Box	Green

Table 1: Scope of Delivery

1.2 Connecting mvBlueLYNX-X

We recommend the following additional items:

1. a USB mouse,
2. a USB keyboard as well as
3. a VGA compliant display.

Please follow these steps to connect the camera (the numbers in the brackets correspond to the numbers in Table 1):

1. Connect the power cable (9) to the 12 V power supply (11).
2. Afterwards connect the power supply with the I/O-Box (1).
3. Now connect the I/O-Box connection cable (8) to the I/O-Box and
4. to the mvBlueLYNX-X (2) male connector labelled "**PWR/IO**".
The end of cable connected to the mvBlueLYNX-X is different to the other end and has a groove in the connector.
5. Connect the "Y cable" (6) to the female connector of the mvBlueLYNX-X labelled with "**VGA/USB**".
6. Finally connect the USB hub (3 + 7+ 10) at the USB connector of the "Y cable".

As soon as you connect a USB mouse and a USB keyboard to the USB hub and also a VGA compliant display (Default resolution of the mvBlueLYNX-X: 1024 x 768 pixels @ 60 Hz) to the VGA connector of the "Y cable", you can start the mvBlueLYNX-X Starterkit.

The following figure shows the correct connection and setup :

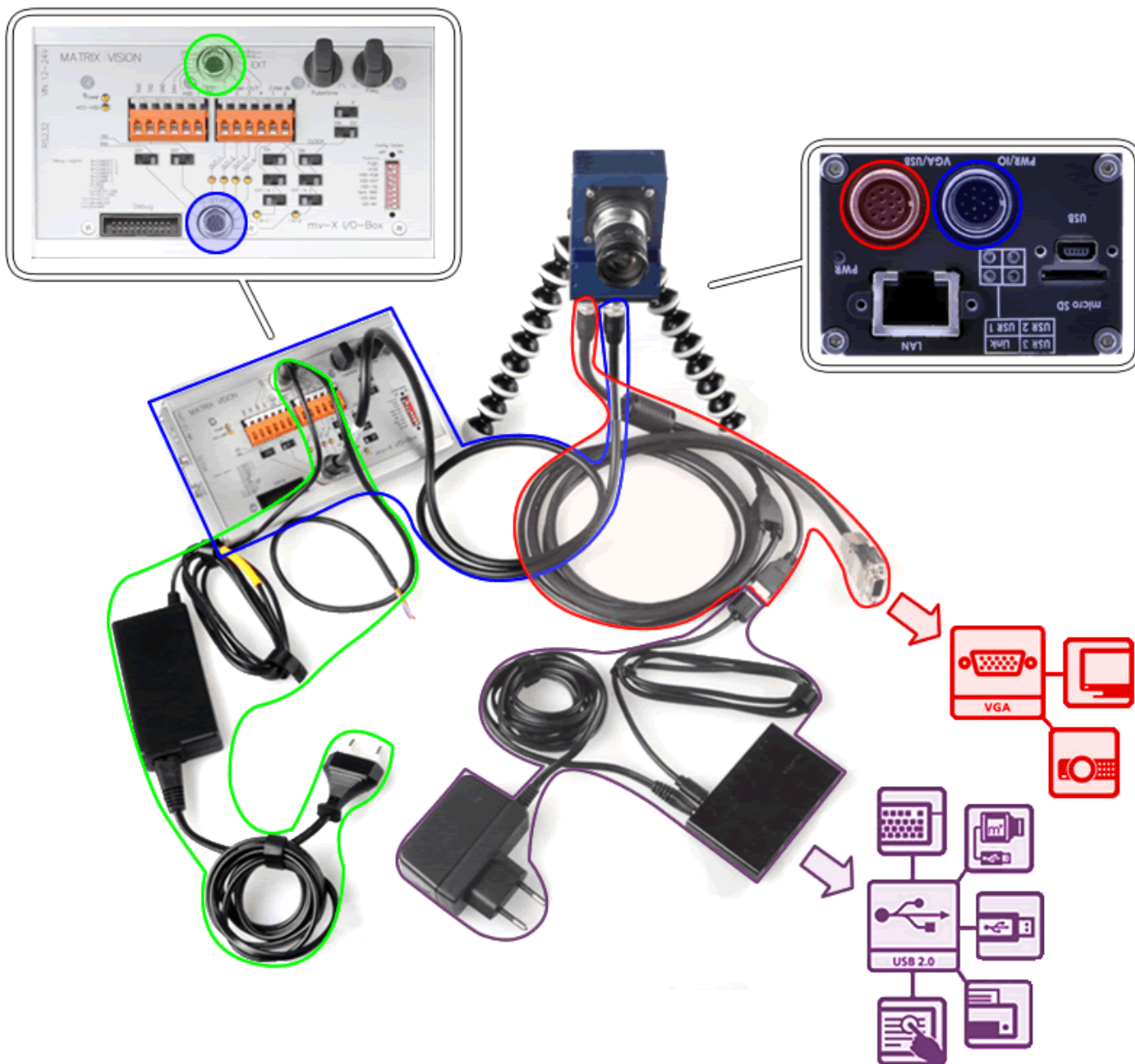


Figure 2: mvBlueLYNX-X Starterkit - correct connection and setup

1.3 Starting mvBlueLYNX-X and Acquiring the First Image

Apply power by connecting the power supply. Now, the mvBlueLYNX-X will boot-up. After around 25 seconds you may see the following desktop:

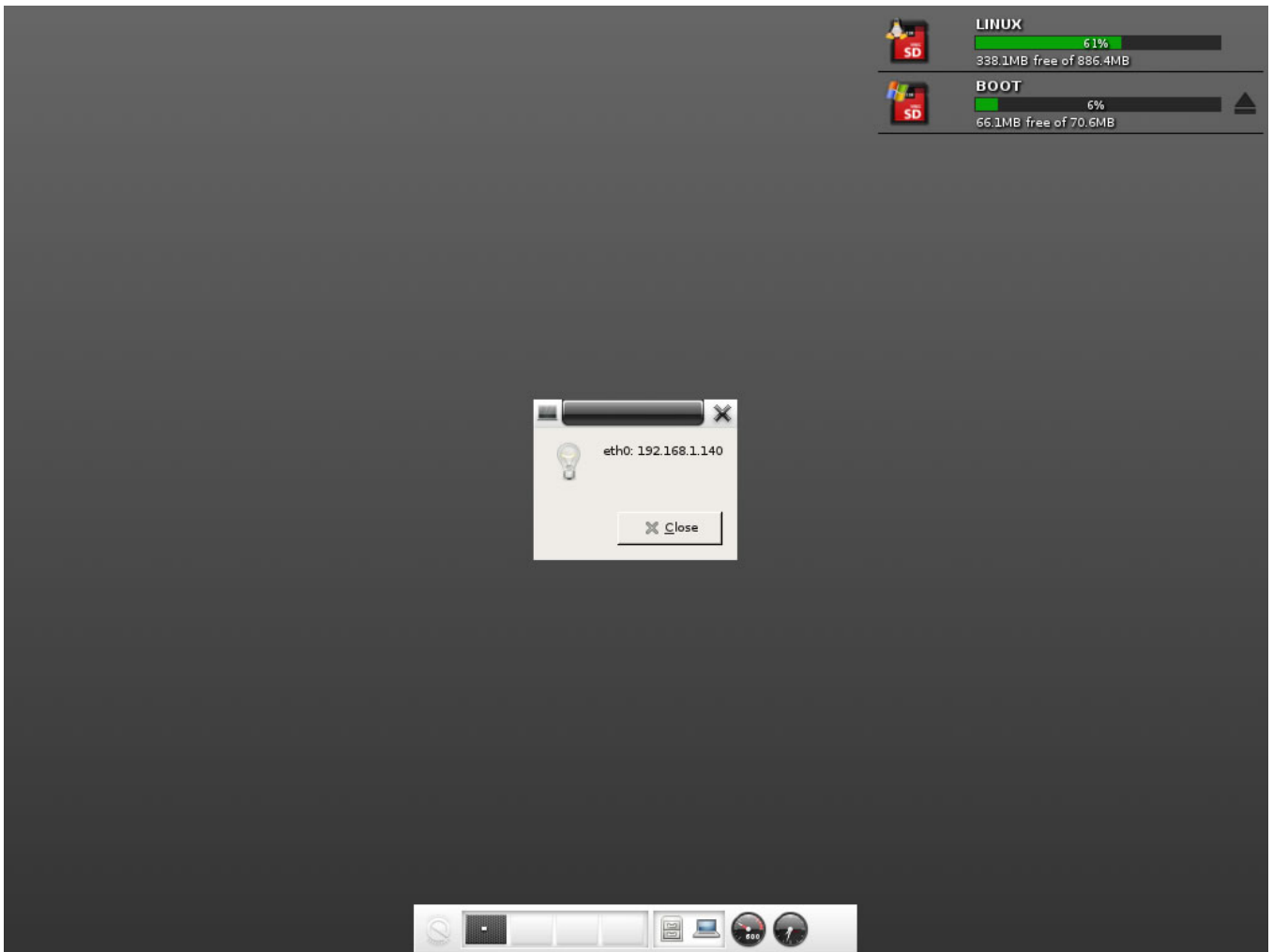


Figure 3: Desktop of the mvBlueLYNX-X

If the mvBlueLYNX-X is connected to a network, you will see the current IP address of the mvBlueLYNX-X for 10 seconds. By default, the camera requests the IP address from a DHCP server.

By right-clicking on the desktop, you can select "**wxPropView**". **wxPropView** is MATRIX VISION's standard tool

- to list and set up camera parameters,
- to configure the camera, and
- to acquire images.

To Acquire your first image, you

1. select the mvBlueLYNX-X "**Device**" and
2. click "**Use**".
3. Now, select the "**Acquisition Mode**" e.g. *SingleFrame*.
4. Afterwards, you can acquire images via "**Acquire**".

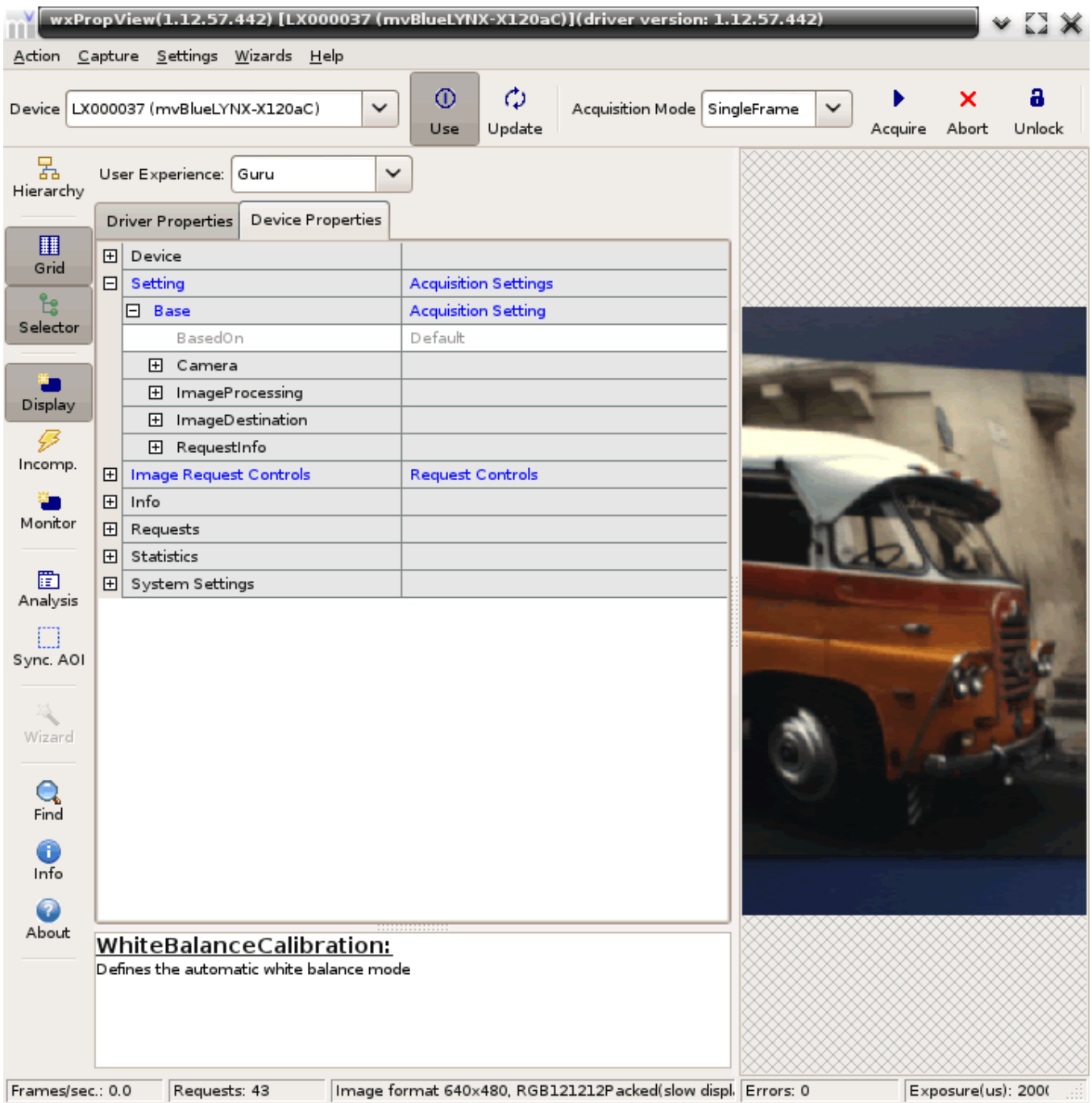




Figure 4: First image

1.4 Getting further Information



Of course, there are many more things the mvBlueLYNX-X can master. A smart camera is an optimized system with high performance and low power consumption. For this reason smart cameras are suitable for automation tasks as soon as PC systems are oversized. Code reading (barcodes, QR codes, DataMatrix codes, etc.), position monitoring and position output, for example, are standard tasks of smart cameras.

The Starterkit provides suitable software solutions:

<p>EyeVision from EVT (http://www.evt-web.com/en/products/eyevision-software/eyevision-30/)</p> <p>You can start EyeVision via left mouse click <i>Favorite Applications -> Eye Vision3</i> or right-click <i>Eye Vision3</i> (the trial runs for 90 minutes).</p> <p>Path to the program samples: <i>/home/root/EVT/EyeVision/Devices/PC_Local/Programs/</i></p>	
<p>HALCON Embedded from MVTec (http://www.halcon.com/embedded/)</p> <p>To execute a .hdev HALCON script, open a Terminal window (left-click on the desktop and <i>Applications -> Accessories -> Terminal</i>) and then (the trial runs for 30 minutes):</p> <pre style="border: 1px dashed gray; padding: 5px;">HALCONtrialrun /PATH_TO_SCRIPT/APP.hdev</pre> <p>Path to the program samples: <i>/opt/HALCONTrialRun/examples/hdevelop/</i></p>	

The Starterkit provides evaluation licenses for both solutions.

We offer further mvBlueLYNX-X information on our website: <http://www.matrix-vision.com> :

<p>mvBlueLYNX-X technical manual (http://www.matrix-vision.com/manuals/mvBlueLYNX-X_technical_manual.pdf) </p>	
<p>Video tutorials for wxPropView and mvBlueLYNX-X (http://www.matrix-vision.com/video-tutorials-en.html) </p>	

1.5 Contact

MATRIX VISION GmbH
 Talstrasse 16
 71570 Oppenweiler, Germany

Availability of the support team:

Mon - Thu: 08:30 a.m. (CET) - 5:00 p.m. (CET)
 Fri: 08:30 a.m. (CET) - 3:00 p.m. (CET)

Phone: +49 - 71 91 - 94 32 - 555

E-mail: support@matrix-vision.de

1.6 Free Training Course Registration Form

<p>Fax Response: +49 - 71 91 - 94 32 - 288</p> <p>The participation in the training is free of charge.</p> <p>MATRIX VISION will send you a confirmation via e-mail.</p> <p>We reserve the right to change the program (Place of jurisdiction: Stuttgart).</p> <p>The general terms of conditions (AGB) drawn up by MATRIX VISION GmbH apply at all times. The general terms of conditions (AGB) are available on the website: www.matrix-vision.com.</p> <p>Not all training rooms are accessible to people using wheelchairs. Please let us know in order to shall make any additional arrangements.</p> <p>Obligation of secrecy</p> <p>The personal data that you enter via this form will only be used to organize the training course. Furthermore we will provide you with information about product news via e-mail. You may object to the use of your data at any time: info@matrix-vision.de</p> <p>Further information:</p> <p><input type="checkbox"/> I would like to receive MATRIX VISION's e-mail newsletter</p> <p>I accept the mentioned Terms and Conditions:</p> <hr/> <p>Date / Signature</p>	<hr/> <p>Salutation</p> <hr/> <p>First name</p> <hr/> <p>Last name</p> <hr/> <p>Position</p> <hr/> <p>Company</p> <hr/> <p>Department</p> <hr/> <p>Street, No.</p> <hr/> <p>Zip code / Place (City)</p> <hr/> <p>Country</p> <hr/> <p>E-mail for registration confirmation</p> <hr/> <p>Phone / Fax</p> <p>Mark with a cross your desired date:</p> <p><input type="checkbox"/> Thursday, 26.02.2015</p> <p><input type="checkbox"/> Thursday, 26.03.2015</p> <p><input type="checkbox"/> Thursday, 23.04.2015</p> <p><input type="checkbox"/> Thursday, 21.05.2015</p> <p><input type="checkbox"/> Thursday, 25.06.2015</p>
---	--