

News List

07

Nov



Change in the company management at MATRIX VISION

[Change in the company management at MATRIX VISION](#)

02

May



High-resolution 31-megapixel cameras for USB 3 and Dual-GigE [High-resolution 31-megapixel cameras for USB 3 and Dual-GigE](#)

01

Jan



New sensors added to camera ranges [New sensors added to camera ranges](#)

25

Sep



The first product in the range includes the Sony Starvis IMX178 CMOS sensor [New, affordable, compact camera range for embedded vision](#)

10

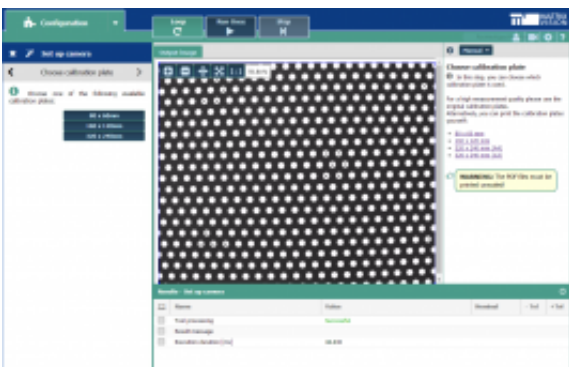
Nov



Starvis sensors from Sony are now available for mvBlueFOX3-2 industrial cameras [USB 3.0 camera available with low-cost rolling shutter sensors from Sony](#)

14

Jun



Camera calibration is a system-wide function, which applies to all inspections on this camera [mvBlueGEMINI Release 1.4 – More objects, circles, fonts and precision](#)

17

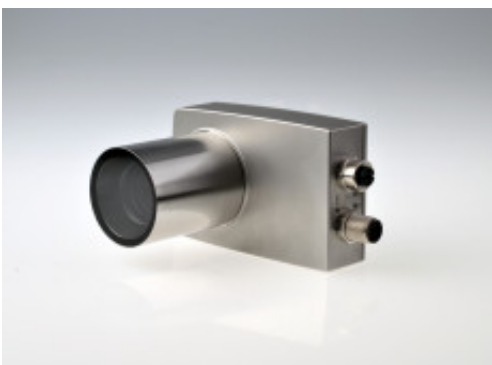
Feb



The partnership of MATRIX VISION and Opto Engineering builds bridges between lenses and cameras and customers and component manufacturers [MATRIX VISION GmbH and Opto Engineering S.r.l. agree strategic cooperation in the field of industrial image processing](#)

21

Jan



The "mvBlueGEMINI" Smart Camera - also with a hygienic design [mvBlueGEMINI – Options and accessories expand the range of possible applications](#)

07

Oct



The "mvBlueGEMINI" smart camera – the "twin" product with perfectly matched hardware and software for the menu-guided development of applications without the need for any image processing expertise. [mvBlueGEMINI Release 1.3 – Measure Tool expands tool set](#)

30

Sep



The "mvBlueGEMINI" smart camera – the "twin" product with perfectly matched hardware and software for the menu-guided development of applications without the need for any image processing expertise - now also available in low-cost variants for specific ap [mvBlueGEMINI - Low-cost variants for specific applications](#)

Page 1 of 16

- [1](#)
- [2](#)
- [3](#)
- [4](#)
- [5](#)
- [6](#)
- [7](#)
- [Next](#)
- [Last »](#)