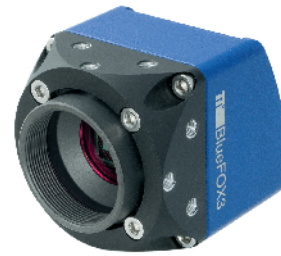


mvBlueFOX3-2

Technical Details



Sensors **Pregius** **STARVIS** **Polarsens**

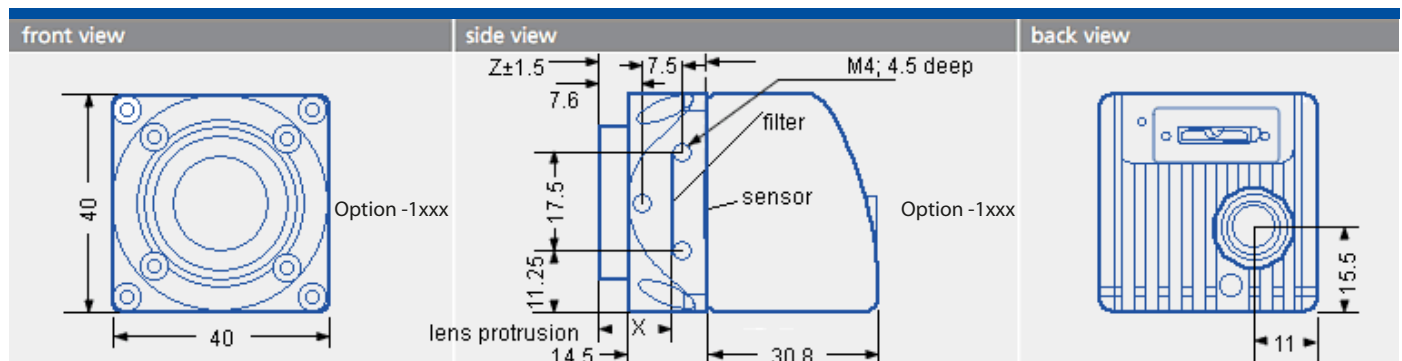
| mvBlueFOX3 | | Resolution (H x V pixels) | Sensor size (optical) | Pixel size (µm) | Frame rate ¹ | Sensor technology | Readout type | ADC resolution / output in bits | Sensor |
|------------|-----|---------------------------|-----------------------|-----------------|-------------------------|-------------------|--------------|---------------------------------|-----------------|
| -2004 | G/C | 728 x 544 | 1/2.9" | 6.9 x 6.9 | 436.9 | CMOS | Global | 12 / 12 | Sony IMX287 |
| -2016 | G/C | 1456 x 1088 | 1/2.9" | 3.45 x 3.45 | 226.5 | CMOS | Global | 12 / 12 | Sony IMX273 |
| -2024 | G/C | 1936 x 1216 | 1/1.2" | 5.86 x 5.86 | 161.4 | CMOS | Global | 12 / 12 | Sony IMX174 |
| -2024a | G/C | 1936 x 1216 | 1/1.2" | 5.86 x 5.86 | 46.9 | CMOS | Global | 12 / 12 | Sony IMX249 |
| -2032 | G/C | 2064 x 1544 | 1/1.8" | 3.45 x 3.45 | 119.2 | CMOS | Global | 12 / 12 | Sony IMX252 |
| -2032a | G/C | 2064 x 1544 | 1/1.8" | 3.45 x 3.45 | 55 | CMOS | Global | 12 / 12 | Sony IMX265 |
| -2051 | G/C | 2464 x 2056 | 2/3" | 3.45 x 3.45 | 75 | CMOS | Global | 12 / 12 | Sony IMX250 |
| -2051p | G/C | 2464 x 2056 | 2/3" | 3.45 x 3.45 | 75 | CMOS | Global | 12 / 12 | Sony IMX250_POL |
| -2051a | G/C | 2464 x 2056 | 2/3" | 3.45 x 3.45 | 35 | CMOS | Global | 12 / 12 | Sony IMX264 |
| -2064 | G/C | 3096 x 2080 | 1/1.8" | 2.4 x 2.4 | 59 | CMOS | Rolling | 12 / 12 | Sony IMX178 |
| -2071a | G/C | 3216 x 2208 | 1.1" | 4.5 x 4.5 | 50.9 | CMOS | Global | 12 / 12 | Sony IMX428 |
| -2089 | G/C | 4112 x 2176 | 1" | 3.45 x 3.45 | 42.4 | CMOS | Global | 12 / 12 | Sony IMX255 |
| -2089a | G/C | 4112 x 2176 | 1" | 3.45 x 3.45 | 31.9 | CMOS | Global | 12 / 12 | Sony IMX267 |
| -2124 | G/C | 4112 x 3008 | 1.1" | 3.45 x 3.45 | 30.7 | CMOS | Global | 12 / 12 | Sony IMX253 |
| -2124a | G/C | 4112 x 3008 | 1.1" | 3.45 x 3.45 | 23 | CMOS | Global | 12 / 12 | Sony IMX304 |
| -2124r | G/C | 4024 x 3036 | 1/1.8" | 1.85 x 1.85 | 31.1 | CMOS | Rolling | 12 / 12 | Sony IMX226 |
| -2205 | G/C | 5544 x 3692 | 1" | 2.4 x 2.4 | 18.5 | CMOS | Rolling | 12 / 12 | Sony IMX183 |

¹ Streaming frame rate (burst mode frame rates see website)

Hardware Features

| | | | |
|---|---|------------------------------|--|
| Protocol | Compliant to USB3 Vision | | |
| Interface | USB 2.0 / 3.0 (up to 480 Mbit/s / up to 5 Gbit/s) | | |
| Image formats | Mono8/10/12/14/16 BayerGR8/10/12/16, RGB8Packed, BGR8Packed, BGRA8Packed, BGR10V2Packed, YUV422/444Packed, YUV422_YUYVPacked onboard color processing | | |
| Triggers | External, software based or free run | | |
| Size w/o lens (W x H x L) Weight w/o lens | 39.8 x 39.8 x 37.7 mm approx. 94 g (option -2xxx) and 110 g (option -1xxx) | | |
| Permissible ambient temperature | Operation: | 0 .. 45 °C / 30 to 80 % RH | |
| | Storage: | -20 .. 60 °C / 20 to 90 % RH | |
| Lens mounts | C-mount (CS-mount as an option for option -2xxx) | | |
| Digital I/Os | 2 opto-isolated inputs / 4 opto-isolated outputs (freely configurable) as an option | | |
| Image memory Flash (firmware, calibration, user data) | 256 MBytes 16 MBytes | | |
| Conformity | CE, FCC, RoHS | | |
| Driver | mvIMPACT Acquire SDK or any USB3 Vision compliant interface or vision library for Windows®, Linux® (32 bit & 64 bit) | | |
| Special features | Burst mode, onboard color processing, Micro-PLC, single-board variant, frame average, robust housing with tripod mounting holes | | |

Dimensions (in mm)



Option -1xxx: X = 10.7 mm with 1" lenses

Z = 17.526 mm (C-mount)

MATRIX VISION MATRIX VISION GmbH
Talstrasse 16

71570 Oppenweiler

Phone: +49-71 91-94 32-0

Fax: +49-71 91-94 32-288

info@matrix-vision.de

Recognize Analyze Decide

www.matrix-vision.de

Subject to change without notice, Date 04/2019