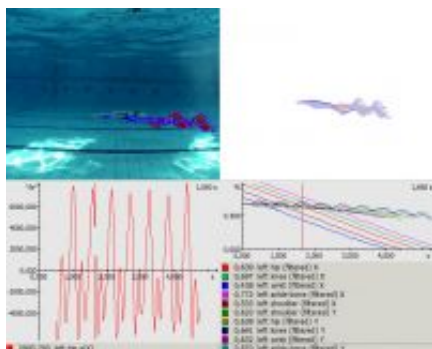
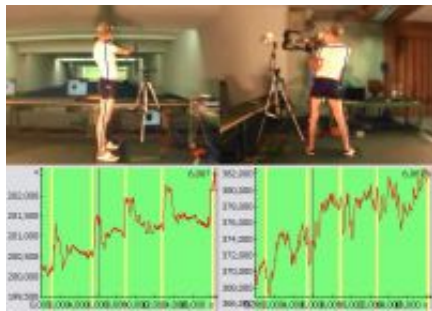


Simi Motion

Simi Motion acquires 2D and 3D movement information with submillimeter accuracy on the basis of high-speed videos. Accurate 2D / 3D information makes it possible to measure mechanical connections objectively, to understand the information, and to optimize activities or to use the input for mechanical simulations. The software also allows to analyze high-speed videos with external analog or digital measurement data, to understand connections in a plant and product tests using images and measurement data (also as a mobile test system).

- Simi website: <http://www.simi.com/>



Supported MATRIX VISION hardware

- [mvBlueFOX3](#)
- [mvBlueFOX](#)
- [mvBlueCOUGAR](#)